

Harpo

COLLAGEN SUN

26/5



**MANUAL • ANLEITUNG •
HANDLEIDING • MODE D'EMPLOI •
РУКОВОДСТВО ПОЛЬЗОВАТЕЛЯ •**

Owner's manual..... 4

This manual provides the required information on warnings, instructions and assembly. You should use this manual for more than just the necessary sunbed assembly and/or maintenance instructions; you need to familiarize yourself with all of the information provided. Persons who use the sunbeds need to be informed and supervised, and it is your duty to make sure they receive proper assistance. *(original instructions)*

Anleitung 10

Dieses Handbuch stellt alle notwendigen Informationen - Warnungen, Anweisungen und Zusammenbauanleitung - bereit. Sie sollten dieses Handbuch nicht nur für die erforderlichen Anweisungen zum Zusammenbau der Sonnenbank und/oder für Wartungsanweisungen verwenden, sondern Sie sollten sich mit allen bereitgestellten Informationen vertraut machen. Personen, die eine Sonnenbank nutzen, müssen informiert und beaufsichtigt werden und es liegt in Ihrer Verantwortlichkeit, dass sie die notwendige Hilfe erhalten. *(Original-Anleitung)*

Handleiding 16

Deze handleiding geeft alleen de noodzakelijke informatie mbt waarschuwingen, instructie en opbouw. Gebruik deze handleiding niet alleen voor de noodzakelijke opbouw en/of onderhoud van de zonnebank, u dient zich op de hoogte te stellen van alle gegeven informatie. Personen die gebruik maken van de zonnebank dienen geïnformeerd en begeleid te worden. Het is uw verantwoordelijkheid ervoor te zorgen dat dit gebeurt. *(Originele handleiding)*

Mode d'emploi..... 22

Vous trouverez dans ce manuel les informations nécessaires concernant les mises en garde, les instructions et le montage. Nous vous recommandons de ne pas utiliser ce manuel uniquement pour les instructions élémentaires de montage du banc solaire/ou pour les instructions d'entretien ; vous devez vous familiariser avec les informations fournies. Les utilisateurs de banc solaire doivent être informés et encadrés, et il est de votre devoir de vous assurer qu'ils reçoivent une assistance appropriée. *(original instructions)*

Ководство..... 28

Настоящее руководство содержит необходимую информацию о предупреждениях, инструкциях по эксплуатации и сборке устройства. Следует использовать это руководство не просто как инструкцию по сборке и (или) техническому обслуживанию солярия; необходимо тщательно ознакомиться со всей приведенной информацией. Пользователи солярия должны быть проинформированы и находиться под присмотром, поэтому Ваша ответственность состоит в том, чтобы оказать им необходимое содействие. *(Оригинальные инструкции)*

Congratulations on the purchase of your VDL Hapro appliance. Your new Hapro Collagen Sun has been manufactured with the utmost care and attention and consists of high-quality parts.

Lamp information	5
Operation	6
Symbols	7
Warranty policy	8
Declaration of Conformity	9
Tanning unit Assembly	34
Removing the acryl sheets	40
Remove face tanners	41
Dimensions	60
Technical data	60

Contents

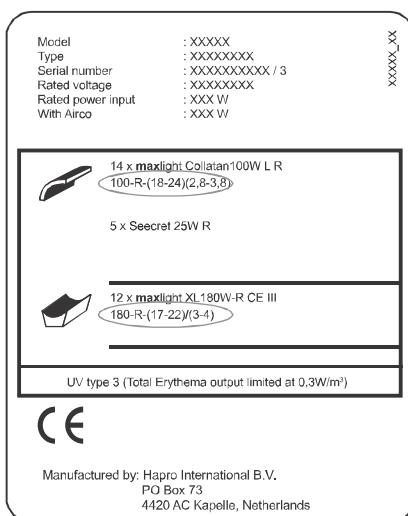
Lamp information

The lamps listed below are those that are installed as standard equipment at the factory. These standard lamps have been selected for optimal tanning results and to match the UV classification of your tanning unit. We recommend that when you replace a lamp you only use lamps of the type currently installed in your tanning unit and which are listed in the table below and on the identification plate. If you choose to install a different type of lamp, you must only use lamps that are marked with an equivalent code which indicates that the UV component falls within the equivalence range listed on the identification plate.

Note: The equivalent code is only applicable to low-pressure fluorescent lamps.

Lamps	Art nr	equivalent code	UV type (EU countries)	UV type (non-EU countries)
maxlight Collatan 100W R	28082	100-R-(17-22)/(3-4)	3	3
maxlight Collatan 100W LR	28083	100-R-(18-24)/(2,8-3,8)	3	3
Seecret 25W R	22506		3	3

Note: The total erythema is limited to 0.3 W/m² for all UV types within the EU.



Example:

On the example identification plate the equivalent codes for the installed canopy and bench lamps are circled.

The equivalent code for the canopy is 100-R-(18-24)/(2,8-3,8)

100 = the wattage of the lamp

R = the reflector type

(18-24) = the equivalence range for the total effective erythema

(2,8-3,8) = the equivalence range for the NMSC ratio

If you intend to install a new lamp, the wattage and reflector type must always match the equivalent code on the identification plate. The effective erythema and NMSC ratio must also match the specified range.

You may only use a lamp other than the recommended type if all of these criteria are met. You must also be aware that:

- The tanning unit is likely to be less effective in terms of tanning performance.
- The circuit protection for your tanning unit must be adapted because the electrical current consumption will have changed.
- The UV classification no longer matches the original classification shown on the identification plate.
- We will not necessarily honour warranty claims arising from the use of lamps other than those we recommend, because the technical operation of your tanning unit might be affected.

Operation

Operation



A Start

Stand-alone mode:

By depressing start once the "+" and "-" buttons can be used to set the tanning time. Pressing for a second time will start the unit.

Coin mode:

The unit can be started automatically by the external timer or the coin automat. The start button can be used only when the unit has to be restarted from "pause".



B Stop

Stand-alone mode:

Pressing stop once will cause the unit to "pause". The lights will go out but the ventilation will continue to run.

Pressing stop twice will initiate a mandatory after-cooling phase of 3 minutes. The unit cannot be started during these 3 minutes.

Coin mode:

Pressing stop once will cause the unit to "pause". The lights will go out but the ventilation will continue to run.

The unit will not respond to pressing stop several times. The external timer or coin automat will switch the unit off. Switching off will initiate a mandatory after-cooling phase of 3 minutes. The unit cannot be started during these 3 minutes.



Illustration after-cooling



C Stand-alone mode:

- Reduce tanning time
- Reduce body cooler speed

Coin mode:

- Reduce body cooler speed



D Stand-alone mode:

- Increase tanning time
- Increase body cooler speed

Coin mode:

- Increase body cooler speed



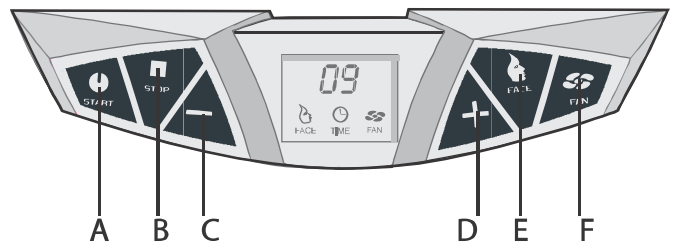
E Face

Switch the face tanner on and off



F Fan

Switch the body cooler on and off



General:

The unit is generally set for use without external timer or coin automat (stand-alone mode). When the unit has to operate in combination with an external timer or a coin automat (coin mode), the internal time should be set to 0 minutes as per procedure below.



depress continuously for 10 seconds



after 10 seconds depress the "-" button and continue to press until the display indicates "00"



press once and the unit will beep in response.

Note: The maximum tanning session is restricted to 30 minutes.

Display messages:



Overrule error (Switch print and/or display print defect)



Filter glass defect (Filter glass of the face tanner is broken or glass protection is defective)



Communication error (No communication between switch print and display print)



Note: When you receive one of the above error messages on your LCD display, you should stop using the unit and remove the plug from the socket. Contact your dealer.



This symbol will appear on the LCD display after 500 tanning hours. It is preferable after 500 tanning hours to replace the lamps with new. After replacing the lamps reset the lamp hour counter.

Note: On the label on the back of the unit the lamps are stipulated that are suitable for your unit.

Sundry:



Hour counter lamps x 10

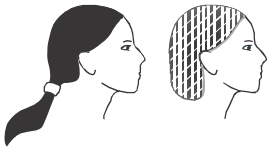


Reset hour counter lamps



Hour counter sun bed x 10

Symbols



Warning symbol:

People with long hair should wear a hairnet!



Warning symbol:

Wear the protective goggles provided



Warning symbol:

Attention please!



Warning symbol:

Sunbed should be disconnected from power source



Warning symbol:

Remove plug from socket



Warning symbol:

Not for household use



Symbol:

Facial tanner



Symbol:

Sunbed canopy



Symbol:

Sunbed bed



Symbol:

Vertical sunbed



Symbol:

Only applicable if this option is ordered

Warranty

Our appliances are manufactured with the greatest attention and are of excellent quality.

Every Hapro appliance is manufactured to meet the international IEC/EN standards.

Your new Hapro Collagen Sun has a manufacturer's guarantee of 1 year, which commences on the

date of installation. Within the warranty period all faults that are the result of material or manufacturing errors will be repaired at no cost. Please contact your dealer for any warranty enquiries.

In order to make a claim under the terms of this guarantee, you must be able to produce the original invoice or receipt bearing the date of purchase.

The type and serial number of the appliance should also be indicated.

The warranty is subordinate to the national regulations on product warranties.

Not covered under this warranty

Units which have the type, serial number and/or other identification labels removed, damaged or altered.

Lamps, starters and acrylic sheets.

Damage due to purchaser abuse, neglect, transport, improper use or improper maintenance.

Damage due to use of accessories not originally supplied by VDL Hapro or inferior accessories.

Damage due to installation, repair or assembly not done by VDL Hapro authorised personnel.

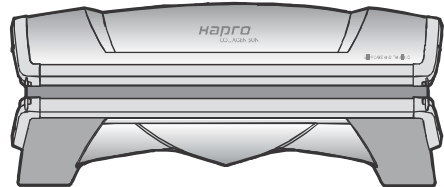
Damage due to fire, lightning, earthquakes or other natural disasters.

Manufacturer

VDL Hapro bv
Fleerbosseweg 33
4420 AC Kapelle, The Netherlands
www.vdlhapro.com

Product identification

Product: Tanning equipment
Model: Hapro Collagen Sun
Type: 26/5



This document is valid for all above mentioned
types produced from:
01-12-2017

Means of conformity

The products are in conformity with Directive 2004/108/EC of the European Community and the Low-Voltage Directive 2006/95/EC of the European Community.

Testing, Electro-Magnetic Compatibility

Carried out by: VDL Hapro Laboratory
Fleerbosseweg 33
4420 AC Kapelle, The Netherlands

Standards used: EN 55014-1:2006 + A1:2009 + A2:2011; EN 55016-2-2:2011
EN-IEC 61000-3-2:2006 + A1:2009 + A2:2009; EN-IEC 61000-3-3:2008
EN-IEC 61000-4-2:2009; EN-IEC 61000-4-3:2006 + A1:2008 + A2:2010;
EN-IEC 61000-4-4:2012; EN-IEC 61000-4-5:2007;
EN-IEC 6100-4-6:2014; EN-IEC 61000-4-11:2004

Testing, Low-Voltage Directive

Carried out by: VDL Hapro Laboratory
Fleerbosseweg 33
4420 AC Kapelle, The Netherlands

Standards used: EN 60335-1:2012
EN 60335-1:2012/C11:2014
EN 60335-1:2012/A11:2014
EN 60335-2-27:2014



Representative

Name: D.C. van de Linde
Function: Managing Director
Date: 01-12-2017
Signature:

VDL Hapro



32296_001

ENG