

# Hapro

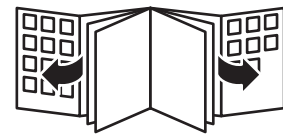
INNERGIZE

ENGLISH	3
DEUTSCH	10
NEDERLANDS	17
FRANÇAIS	24
ITALIANO	31
ESPAÑOL	38
РУССКИЙ	45
NORSK	53



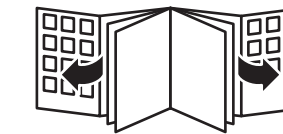
HP8580

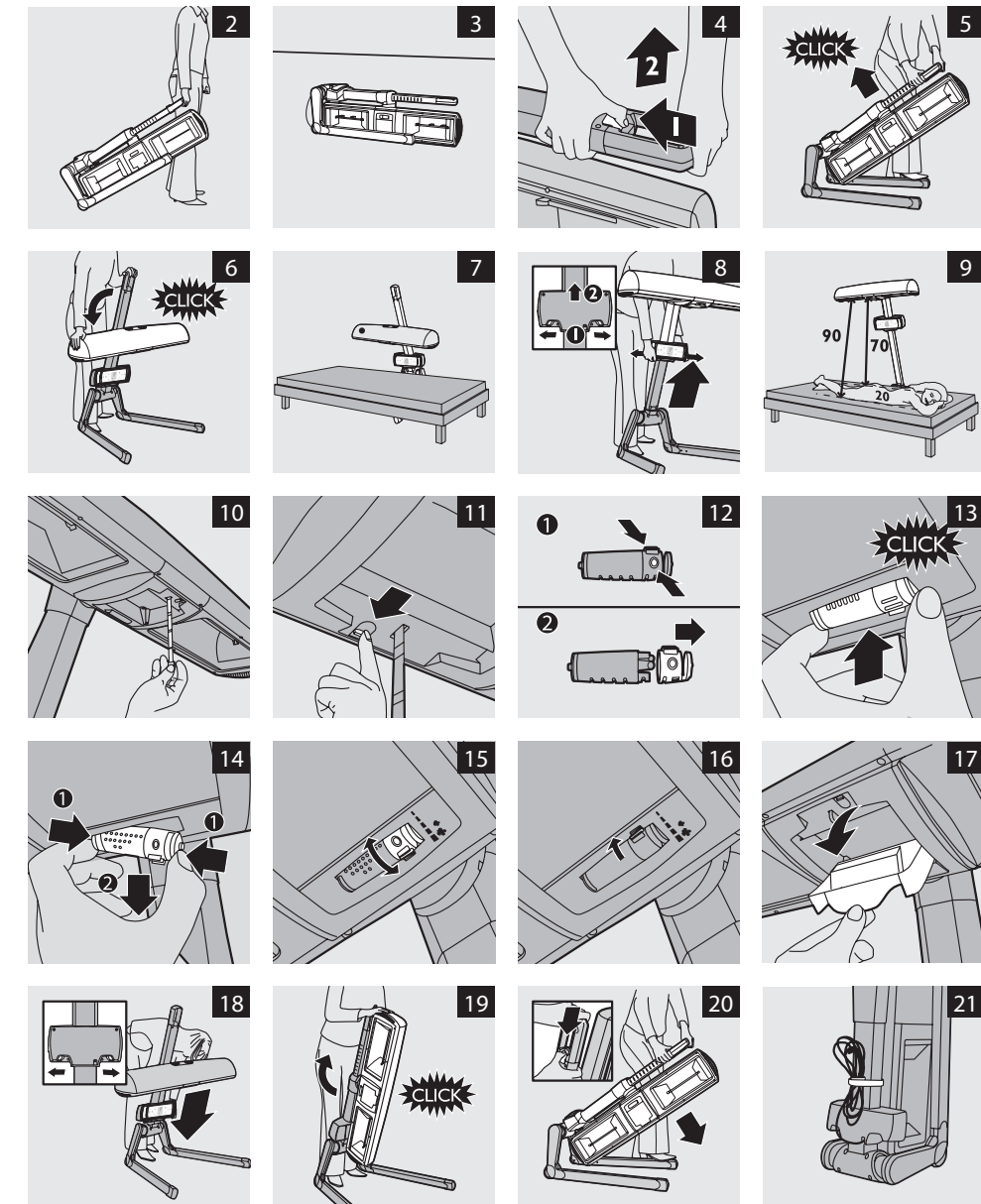
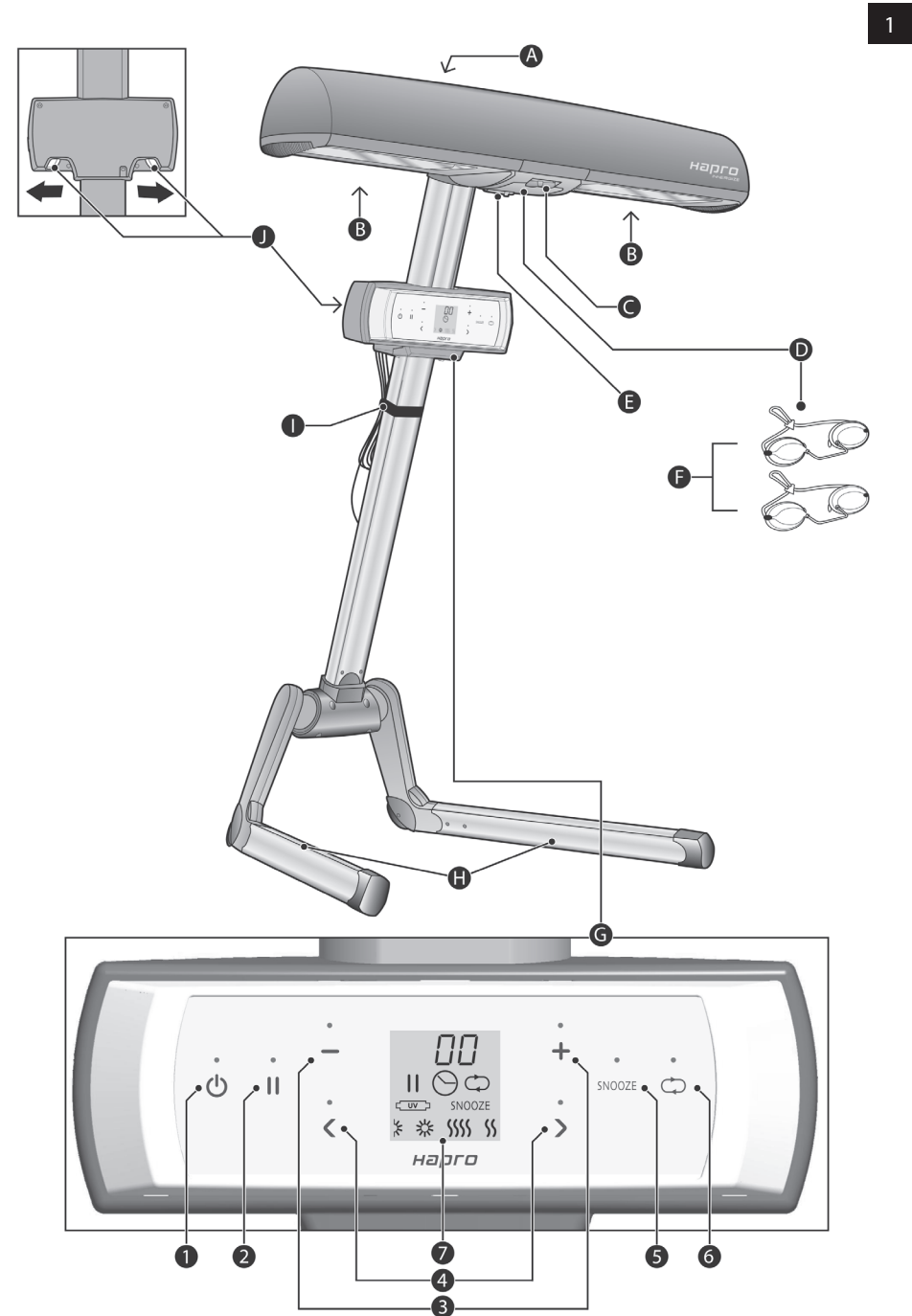
©2014 Hapro International, 34100 rev. 00



**HAPRO**  
a VDL Company  
[www.hapro.com](http://www.hapro.com)

100% recycled paper  
100% papier recyclé





## Introduction

Congratulations on your purchase of the VDL Hapro Innergize wellness solarium. The combination of UV light and infrared warmth produces a natural, even and long-lasting tan. To enjoy relaxing warmth all over your body, the infrared lamps can also be used separately. The Innergize can be fold into a compact size in three simple steps to save valuable space.

## General description (Fig. 1)

- A** Handgrip
- B** Lamp unit
  - 2 HPA UV lamps
  - 2 Infrared lamps
- C** Measuring tape
- D** Storage compartment for protective goggles
- E** Fragrance cartridge
- F** Protective goggles
- G** Control panel
  - 1 Start/stop (⏻)
  - 2 Pause (⏸)
  - 3 Time-selection (+ / -)
  - 4 Function selection (< / >)
  - 5 SNOOZE
  - 6 Repeat (↺)
  - 7 Display
- H** Legs
- I** Velcro cord wrap strip
- J** Dual push button

## Important

Read these instructions for use and the 'Sunny prospect' brochure carefully before you use the appliance. Keep them in a safe place for future reference.

- Check if the voltage indicated on the appliance corresponds to the mains voltage in your home before you connect the appliance.
- If the wall socket used to power the appliance has poor connections, the plug of the appliance becomes hot. Make sure you plug the appliance into a properly connected wall socket.
- The appliance must be connected to a circuit that is protected with a 16A standard fuse or a slow-blow automatic fuse.
- If the supply cord is damaged, it must be replaced by the manufacturer or service agent or a similarly qualified person in order to avoid a hazard.
- Let the appliance cool down after use for approx. 15 minutes before you fold it back into transport position and store it.
- Only move the appliance when it is in transport position.
- Make sure the vents in the centre and at both ends of the lamp unit housing remain open during use.
- The UV filters become very hot when you use the appliance. Do not touch them.
- Do not choose a tanning distance of less than 70cm.

### Scent granules:

- Keep the scent granules out of the reach of children.
- Do not use the scent cartridge if you are allergic to scent. Consult your doctor in case of doubt.
- The scent granules are not edible.

## 4 ENGLISH

- In case of eye contact with the scent granules, flush the eyes immediately with plenty of water.

### General

- The appliance is fitted with an automatic protection against overheating. If the appliance is insufficiently cooled (e.g. because the vents are covered), the appliance switches off automatically. Once you have removed the cause of overheating and the appliance has cooled down, it switches on automatically again.

### Relaxation and your health

Warmth has a relaxing effect. Think of what a hot bath or lazing in the sunshine does to you. You can enjoy the same relaxing effect by selecting the relax function  $\S\S$  or  $\S\S\S\S$ .

Bear in mind the following when you have a relax session:

- Avoid getting too hot. Increase the distance between yourself and the lamps, if necessary.
- If your head gets too hot, cover it or move your body so that less heat is emitted towards your head.
- Close your eyes during a relax session.
- Do not let the relax session last too long (see section 'Relax sessions: how often and how long?').

### Relax sessions: how often and how long?

If you want to pamper your muscles or joints or want to enjoy the relaxing warmth of the full-body solarium without getting a tan, only switch on the infrared lamps to get a deep relaxation. If you want to continue enjoying the full-body solarium's warmth after your tanning session, switch on the infrared lamps only for a relax session.

You can take infrared relax sessions several times a day (e.g. 30 minutes in the morning and in the evening).

### Preparing for use

*Note: You can easily move and store the appliance in transport position (Fig. 2).*

#### **1** Put the appliance on the floor as shown in the figure (Fig. 3).

Make sure there is sufficient room on either side of the appliance to allow the legs to move outwards.

#### **2** Press the dual push button in the handgrip (1) and pull the stand slightly up (2). Then release the push button (Fig. 4).

On a smooth floor, the legs of the appliance automatically move outwards. If the floor is not smooth, e.g. a carpeted floor, you may have to put your foot on one of the legs to allow the other leg to move outwards.

#### **3** Pull up the stand by the handgrip as far as it goes. (Fig. 5)

The stand locks into position with a click.

#### **4** Turn the lamp unit in the direction indicated in the figure. (Fig. 6)

This requires some force at first. Push the lamp unit in the direction indicated until it locks into position with a click.

*Note: You can only switch on the appliance for a tanning or relax session if the lamp unit is in the correct position.*

#### **5** Push the legs of the appliance under the bed or sofa you intend to lie down on. The lamps for functions $\S$ and $\S\S$ are on the marked side of the appliance. (Fig. 7)

- 6 Press the release buttons in the recesses of the control panel (1) and push the control panel upwards along the stand (2). Let go of the release buttons when the lamp unit is at the required height. (Fig. 8)**
- The distance between the UV filters and your body must be 70cm. The distance between the UV filters and the surface on which you lie (e.g. a bed) must be 90cm. (Fig. 9)
  - Pull out the measuring tape to determine whether the appliance is at the required height. (Fig. 10)
  - The measuring tape automatically rewinds when you operate the red tab. (Fig. 11)

## Using the appliance

### Tanning or relaxing

- 1 Fully unwind the mains cord.**
- 2 Put the plug in the wall socket.**
- 3 Put on the protective goggles.**
- Attach the string to the protective goggles provided.
  - Adjust the string to the length you find most comfortable.
  - Only use these protective goggles when you tan with a VDL Hapro tanning appliance. Do not use them for other purposes.
  - The protective goggles comply with protection class II according to directive 89/686/EEC.
- 4 Lie down straight below the lamp unit of the appliance.**
- 5 Press the + / - button to set the time.**
- See the 'Relaxation and your health' chapter and the 'Sunny prospect' brochure for the correct tanning time or relaxation time.
  - Press + to lengthen the time. Press - to shorten the time.

### Interrupting the tanning or relax session

- To interrupt a tanning session, press ||. The lamps go out. The lamps are switched off and the || symbol appears on the display. The three-minute cool-down time flashes on the display and begins to count down. The lamps cool down during this three-minute period. Once the cool-down time has reached 0 and the remaining time is flashing in the display, you can switch the appliance on again. Press || to start the countdown of the remaining session time.
  - To interrupt a relax session, press ||.
- The lamps are switched off and the pause symbol and the remaining time appear on the display. The waiting time does not apply to the infrared lamps, so you can switch the appliance back on whenever you want. Press ☺ or || to start the countdown of the remaining time.

- 6 Press < / > to select a function.**

### Adjusting functions

- The display shows the different functions.
- The symbol that is flashing shows the function you have selected.

- 7 Choose:**

- symbol ☀ if you want to tan your whole body
- symbol ☀ if you want to tan a specific part of your body\*
- symbol ☺ if you want to relax
- symbol ☺ if you want to warm up a part of your body\*

\* One side of the lamp unit goes on.

- 8 Press ☺ to switch on the tanning lamps or the infrared lamps.**

*Note: It can take a few seconds for the lamps to go on. This is normal.*

## 6 ENGLISH

### **9** A countdown timer appears on the display next to the number of minutes.

The countdown of the set tanning or relax time starts.

#### **Last minute**

The appliance beeps during the last minute of the session.

- During the last minute, you can repeat the set time. (This is only possible during the relax session or if the set tanning time does not exceed 20 minutes.)
- Press the repeat button (↺).

*Opmerking: Het scherm toont de ingestelde tijdsduur en begint af te tellen. Het geluidsignaal stopt.*

During the last minute, you can set a new time. Press the + / – buttons to select the desired length of time and then press the ⏻ button.

Note: By setting a new time, you can avoid the 3-minute waiting time which is necessary to let the tanning lamps cool down after they have switched off. This 3-minute waiting time does not apply to the infrared lamps.

- During the last minute of the tanning or relax session, you can press the SNOOZE button to enjoy the warmth of the infrared lamps for 9 more minutes. You can press the SNOOZE button as often as you like.

### **Natural fragrances**

During the tanning or relax session, you can enjoy your favourite fragrance. You can choose from three different fragrances.

*Note: The scent granules have been specially developed for use in this appliance. Do not use other granules.*

#### **Filling the cartridge**

- 1** Pull the cap off the cartridge while you apply pressure on the small pressing points. (Fig. 12)
- 2** Open the sachet at the small opening at the top.
- 3** Fill the cartridge with the content of one whole sachet of scent granules.
- 4** Put the cap back onto the cartridge ('click').

#### **Placing or removing the cartridge**

- 1** Place the cartridge in the holder. It only fits in one way and locks in place with a click. (Fig. 13)
- 2** To remove the cartridge, place your thumb and index finger on the sides of the cartridge. Press on the disc to remove the cartridge from the holder. (Fig. 14)

#### **Setting the fragrance level**

- 1** Turn the cartridge to set the fragrance level. (Fig. 15)  
Turn the cartridge in the direction of the large flower symbol to increase the fragrance level. Turn it in the opposite direction to reduce the fragrance level.
- 2** When you store the appliance or do not want it to emit a fragrance, turn the cartridge away from the large flower symbol as far as it goes. (Fig. 16)  
The holes are no longer visible.
- 3** Replace the granules when the cartridge no longer emits any fragrance. Replacement packages with 3 sachets of scent granules are available under type number HB080.

Please bear in mind that the fragrance level depends on a number of factors, such as the following:

- Habituation may cause fragrances to be perceived less or not at all, but this is normal.
- When you lie on your belly, the fragrance is less noticeable than when you lie on your back.
- Airflows in the room where you use the appliance may also affect the fragrance level.
- Your personal condition may also influence the degree to which you perceive the fragrance.

## Storage

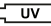
- 1** Let the appliance cool down for 15 minutes before you put it in transport position and store it.
- 2** Store the protective goggles in the storage compartment between the two lamps. (Fig. 17)
- 3** Make sure the cord does not get stuck between parts of the appliance when you put the appliance in transport position.
- 4** Turn the appliance away from the bed or sofa and make sure there is enough space around the appliance to collapse it.
- 5** Press the two release buttons in the recesses of the control panel and slide the control panel down the stand as far as it goes. (Fig. 18)
- 6** Turn the lamp unit in the direction of the arrow. (Fig. 19)  
You hear a click when the lamp unit locks in vertical position.
- 7** Pull the stand slightly backwards and then press the dual push button. Lower the stand slowly until the lamp unit rests on the floor between the legs. (Fig. 20)
- 8** Wind the cord and fasten it with the Velcro cord wrap strip. (Fig. 21)  
You can store the appliance in a wardrobe or under a bed.

## Replacement

### Tanning lamps


**Always have the tanning lamps and starters replaced by a service centre authorised by VDL Hapro. Only they have the knowledge and skills required for this job and the original spare parts for appliance.**

The light that the tanning lamps emit becomes less bright in time (i.e. after a few years in case of normal use). When this happens, you notice a decrease in the tanning capacity of the appliance.

- After 750 operating hours, the tanning capacity of the lamps has decreased so much that replacement of the tanning lamps is advisable.
- The appliance has a counter that records the operating hours of the tanning lamps. After 750 operating hours, an  appears on the display to indicate that replacement of the tanning lamps is advisable.

*Note: Of course, you can choose to postpone replacement for a while by setting a longer tanning time.*

### Viewing the operating hours of the tanning lamps

- 1** Set the time to 00 and press the repeat button (  ) to make the operating hours appear on the display. The maximum number of hours that can be displayed is 999. The number of hours is displayed for ten seconds.

## 8 ENGLISH

### Resetting the operating hours counter

Follow these steps to clear the (symbol) symbol from the display:

- 1 Have the tanning lamps replaced by a VDL Hapro-authorized service centre.
- 2 Make sure the display is set to 00.
- 3 Press the buttons in the following sequence:

Start/stop button (⏻), pause button (⏸), pause button (⏸), repeat button (↺), pause button (⏸)

The  symbol disappears from the display.

### Other parts

**Have the infrared lamps (1100W) and the UV filters replaced by a service centre authorised by VDL Hapro. Only they have the knowledge and skills required for this job and the original spare parts for the appliance.**

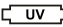
- Have the infrared lamps replaced when they stop functioning.
- The UV filters protect against exposure to undesired UV light. It is therefore important to have a damaged or broken filter replaced right away.
- If the mains cord is damaged, you must have it replaced by Philips, a service centre authorised by VDL Hapro or similarly qualified persons in order to avoid a hazard.

### Troubleshooting

If problems should arise with this appliance and you are unable to solve them by means of the information below, please contact the nearest VDL Hapro dealer.

Problem	Solution
The appliance does not work.	The plug may not be inserted properly in the wall socket. Put the plug properly in the wall socket.
	There may be a power failure. Test if the power supply works by connecting another appliance.
	The tanning lamps may still be too hot to go on. Let them cool down for 3 minutes first.
	The overheat protection may have switched off the appliance automatically because it overheated. Remove the cause of overheating (e.g. a towel that blocks one or more vents). Let the appliance cool down for a while and then switch the appliance back on.
	Make sure the lamp unit is in the right position. See chapter 'Preparing for use'.
The top of the control panel becomes hot during use.	The lamps heat up the top of the control panel. This is normal.
The fuse of the circuit to which the appliance is connected cuts off the power when I switch on or use the appliance.	The fuse of the circuit to which the tanning appliance is connected must be a 16A standard fuse or a slow-blow automatic fuse. You may also have connected too many appliances to the same circuit.



Problem	Solution
The tanning results not as good as I expected.	Perhaps you use an extension cord that is too long and/or does not have the correct current rating. Consult your dealer. Our general advice is not to use an extension cord.
	You may have followed a tanning course that is not appropriate for your skin type. Check the table in chapter 'Tanning and your health', section 'Tanning sessions: how often and how long?'
	The distance between the lamps and the surface you lie on may be larger than prescribed. See chapter 'Preparing for use'.
	When the lamps have been used for a long time, the tanning capacity decreases. This effect only becomes noticeable after several years. To solve this problem, select a slightly longer tanning time or have the lamps replaced. The  symbol appears on the display after 750 hours to indicate that it is advisable to replace the lamps.
	The tanning result depends on your skin type and the tanning course you are taking. The first effect only becomes visible after a few sessions.
The appliance does not produce enough fragrance.	Read the last part of section 'Natural fragrances' in chapter 'Using the appliance'.
An E-code appears on the display and/or the appliance beeps.	Stop using the appliance and unplug it. Wait two seconds and put the plug back into the wall socket. Contact your dealer or a VDL Hapro service centre if the problem reoccurs.